

# THE WARE VALVE SHOP





**NEWCO®**

Cast steel valves are available in a wide range of body/bonnet materials and optional trim materials.



**FLOWSERVE** EDWARDS

High performance valves for critical service.



**Davis Valve**

Davis Valve wide range of industrial valves for many different applications.



**Clark-Reliance®**

Clark - Reliance markets boiler level instruments, remote level indicators and controls.



spiraxsarco/GESTRA

Gestra supplies steam traps, boiler controls and condensate pumps.



**TRERICE**  
TEMPERATURE • PRESSURE • CONTROL

Terice provides regulators and control valves.



**CRANE**

CRANE provides check, plug, gate, globe, ball and butterfly valves.



**B**  
BONNEY FORGE

Bonney Forge - The name you can trust for steel valves. Bonney Forge steel valves have defined "state-of-the-art" in quality, design and manufacturing.



**UNITED**

United supplies boiler trim valves.



**JORDAN VALVE**

Pressure and temperature regulators, pneumatic and electric control valves.



**JERGUSON®**

Jerguson supplies transmitters, switches, gages and valves.



**WARREN CONTROLS**

Warren Controls offers control valves and accessories.



**Everlasting**  
VALVE COMPANY

Everlasting provides process valves, diverter valves, bulk material valves and boiler blowdown valves.



**MAXON™**

Maxon markets shut off valves, gas and control valves.



**WATSON M'DANIEL**

Watson McDaniel markets steam traps, regulators and pumps.

# THE VALVE SHOP

With over fifty-five years in steam and process flow control, The Valve Shop is a complete valve service and repair facility.

The Valve Shop offers testing, diagnosis, maintenance and repair services for all makes and models of valves. All Valve Shop repair procedures strictly adhere to the industry standards and codes.

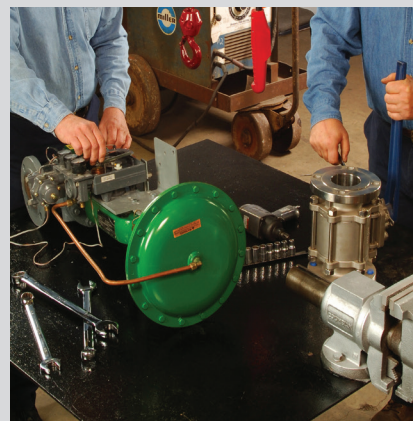
With a mobile valve shop available 24 hours a day, seven days a week all year, services include complete valve overhaul and in-line relief valve testing. Repairs are often completed in a fraction of the time when compared to the valve manufacturer.

***National Board Certified***

***Field Service Capabilities***

***Offers 24 Hour Service,  
7 Days a Week, All Year***

***Employs Expert Staff to  
Assist in All of Your  
Pressure Relief Valve Needs***



# SERVICES AND PRODUCTS

## Services

- Mobile Valve Repair
- In-Line Testing
- Process Safety Management
- New / Re-Conditioned
- 24/7 Emergency Service
- Repair
- Remanufacture
- Certify
- Calibrate
- Modify

## Products

- Gate
- Globe
- Check
- Control
- Plug
- Ball
- Butterfly
- Safety Relief
- Blowdown
- Regulators
- Actuators
- Positioners



# WEBSITE CAPABILITIES



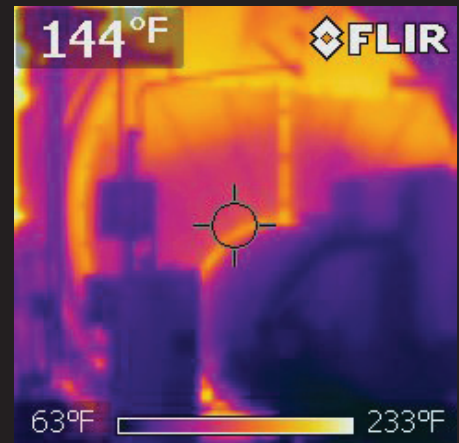
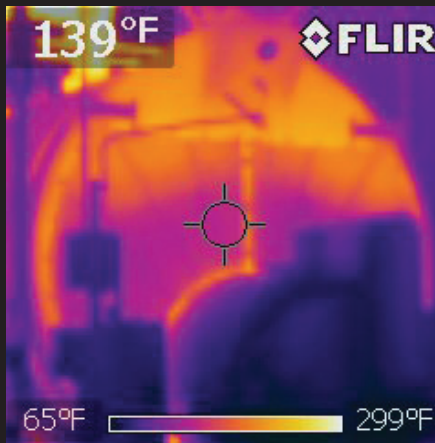
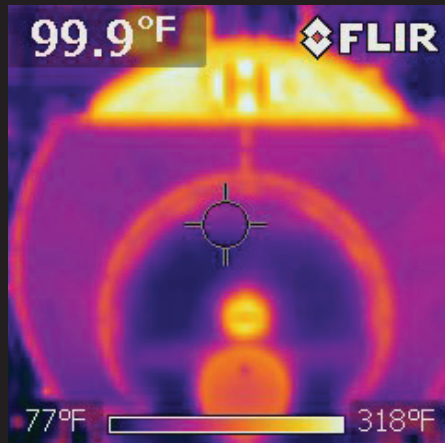
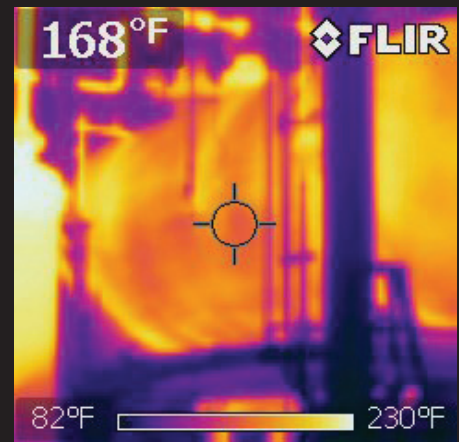
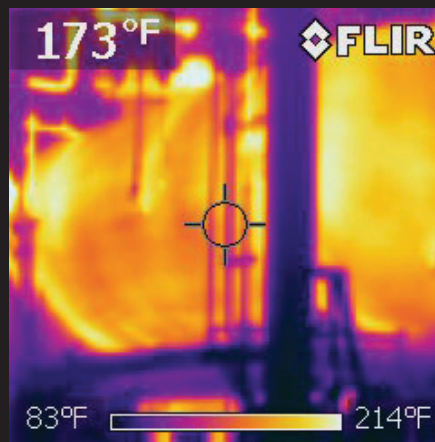
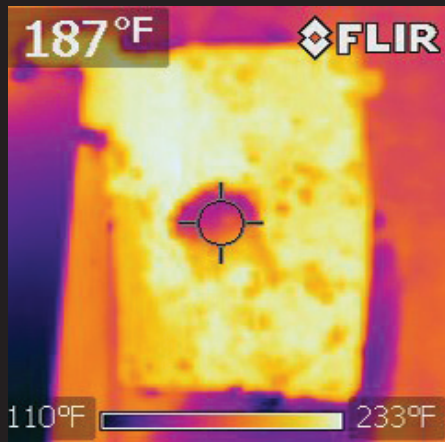
The Valve Shop is an industry leader when it comes to utilizing its website to serve customers.

With a user name and password, a customer can go to [www.wareinc.com](http://www.wareinc.com) to view your PM agreements, project quotes, valve test reports, rental quotes, equipment listing and open invoices.

This site catalogs your billing and quoting information, P2 sheets on each piece of equipment, all service records, serial numbers, and other important information about your equipment.

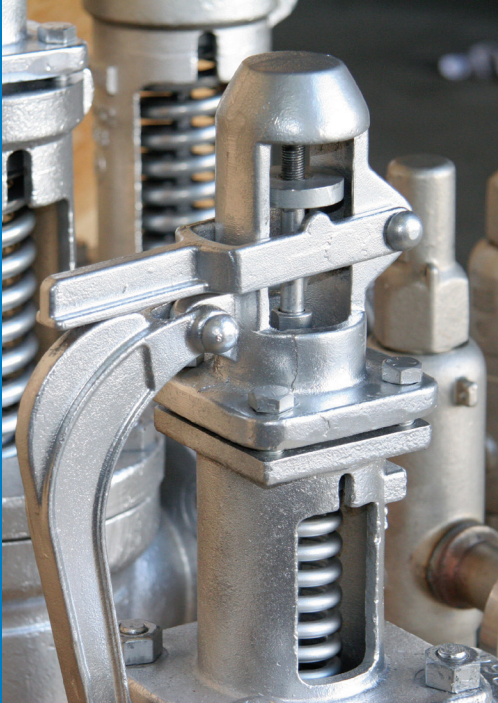
Having this information one click away facilitates faster service to you because technicians will know everything they need to know about your equipment immediately and The Valve Shop will be ready to serve you.

# THERMOGRAPHY



The Valve Shop uniquely incorporates utilization of infrared thermography in Steam System repair and maintenance. Using a thermal imaging camera, technicians can see variations in temperature enabling them to pinpoint hot spots and steam leaks quickly and easily. This technique can enable the technician to find problem areas in your system that can't be seen by the human eye and fix them before they become a major issue.

# REPAIRS



**BEFORE**



**AFTER**

The Valve Shop repair technicians are trained to work on a variety of valves. Valve repairs are provided on the following types of valves:

- control
- globe
- ball
- pressure-reducing
- check
- butterfly
- gate
- gas regulator
- plug

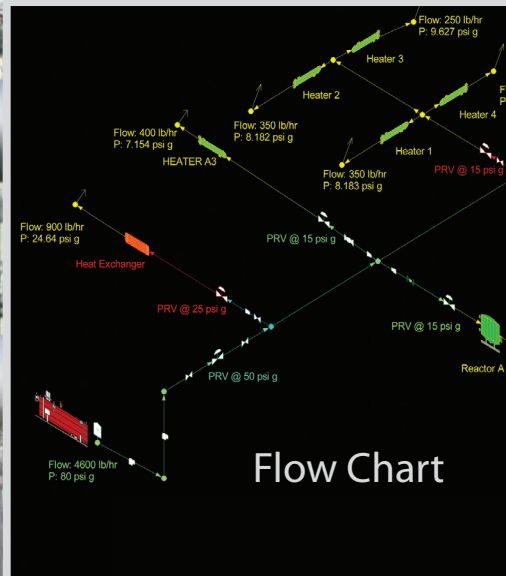
Repairs to safety relief valves are completed to the National Board of Pressure Vessel Inspectors VR program standards and are repaired to the manufacturer's original specifications and stamped with a VR stamp.

An initial evaluation of a valve is completed at no charge to the customer. Once it has been determined that a valve is repairable, a firm price for the repair is provided.





# STEAM MAPPING



The Valve Shop's new Steam Mapping product provides a "road map" for your steam distribution system and condensate return system. Steam mapping provides an analytical tool for documenting the current steam distribution system and documenting changes to your system.

Steam Mapping provides detail on:

- flow rates
- velocity
- pipe size
- pressure drops
- head loss

The process for mapping a steam system begins with a visit to your site by a Valve Shop professional who will gather every detail on your system. The size, number, length and schedule of each pipe in the system is recorded. A count is taken of all components from the point of generation to each point of use.

All of the information is used to generate a model of your system, then The Valve Shop can then calculate the pressure loss, velocity, flow rates and pressures for your steam system in series and branch configurations.

The Valve Shop can alter components such as the control valves or calculate throttle valve positions needed to balance the circuits in a piping system. The Valve Shop can also size flow meters and balancing orifices and see how this affects the operation of the total piping systems.

If you are anticipating additions to or reductions of the steam system, the changes can be modeled to determine what the impact of these changes will be in advance or in diagnosing problems encountered in your system such as components wearing out prematurely.

You will receive a report that will include several scenarios, for example: first shift, second shift and off-hour demands or peak heating demands versus summer loading. Individual components in the system can be viewed or the system can be viewed in its entirety using color gradients to show all pipe sizes, velocities and flow rates.

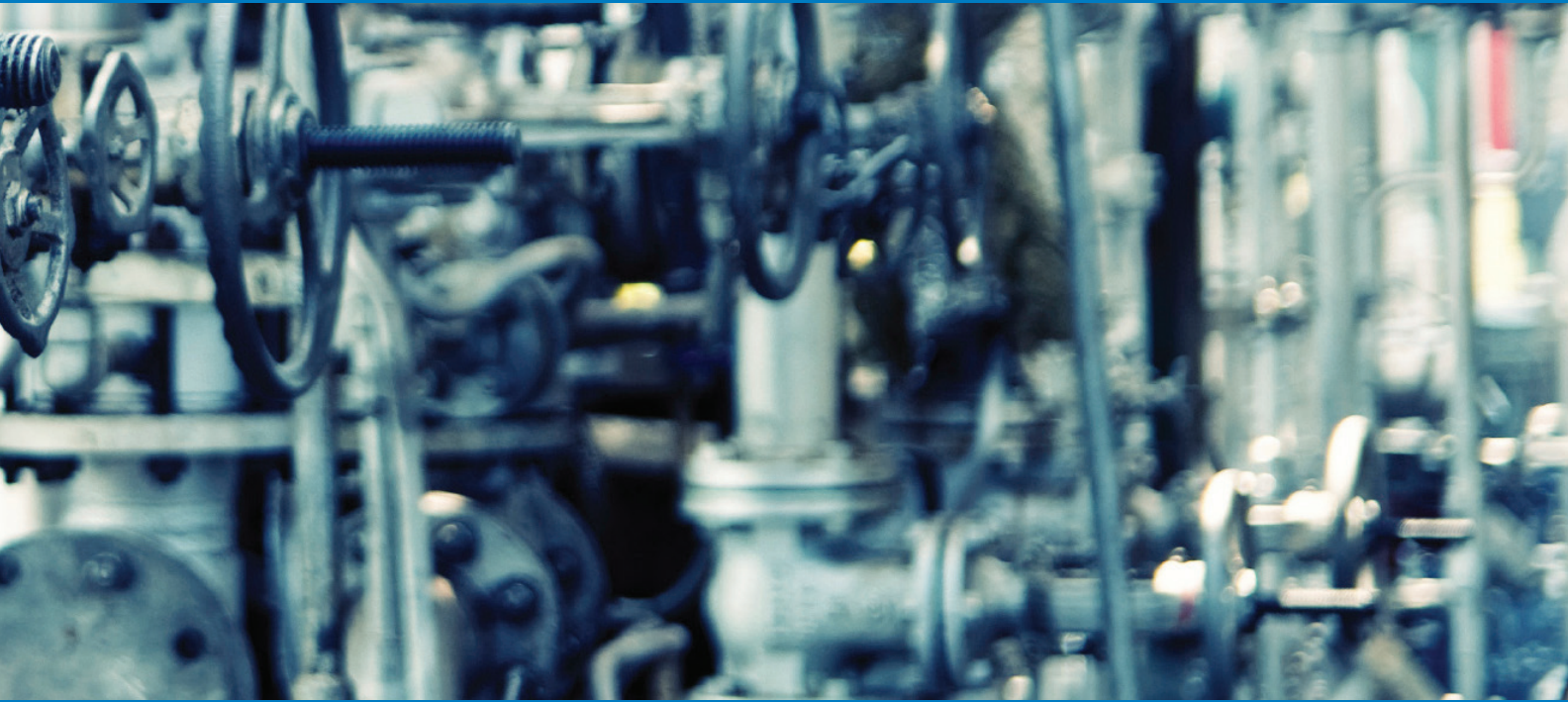


## Steam System Analysis

*The Valve Shop is unique in the industry in its approach to helping customers solve steam system issues with a Steam Study.*

The Steam Study focuses on resolving problems encountered in a facility's process areas, where the steam is being used. The Valve Shop reviews the steam distribution system at each point of use including traps and the condensate return system. Many of the improvements can be performed by the customer, saving time and money. The Steam System Analysis includes:

- A comprehensive report of the system is provided
- Observations and recommendations for improvements to the system
- Operating cost associated with the problems
- Priority list of Safety-Related problems
- List of process related improvements
- Trap report included
- Priority list of payback analysis



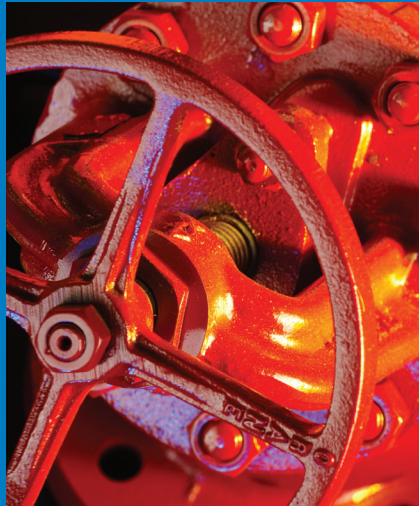
## **Boiler Room Analysis**

*In conjunction with the Steam System Analysis, The Valve Shop also offers a comprehensive boiler room analysis, covering all aspects of the boiler room.*

Our professionals evaluate your boiler room from A to Z, starting with incoming water and working our way to out-going steam. This comprehensive program will help you identify maintenance issues, efficiency opportunities and needed training just to name a few. This analysis covers all the boiler room equipment including auxiliaries:

- Conductivity: meter/automated/manual
- Metering: gas fuel, water, steam, oil
- Burner adjustments
- Combustion readings: stack temperature, on/off burner, modulating burner
- Controls
- Deaerator tank: temperature, pressure, operating efficiency
- Blowdown tank
- Make-up air provision and analysis
- Requirement calculation for ALL equipment
- Economizers
- Blowdown recovery systems
- Future steam load projection: increase or decreasing
- Detection of hot spots
- Evaluation of boiler room insulation on headers, piping, DA, etc
- Sight glass condition and type

# THE WARE VALVE SHOP



North Regional Office  
4005 Produce Road · Louisville, KY 40218  
1.800.228.8861 · [www.thevalveshopinc.com](http://www.thevalveshopinc.com)  
[info@thevalveshopinc.com](mailto:info@thevalveshopinc.com)

South Regional Office  
2026 Polymer Drive · Chattanooga, TN 37421  
1-800-228-8861 · [www.thevalveshopinc.com](http://www.thevalveshopinc.com)  
[info@thevalveshopinc.com](mailto:info@thevalveshopinc.com)

A division of WARE